

#### Technical features:

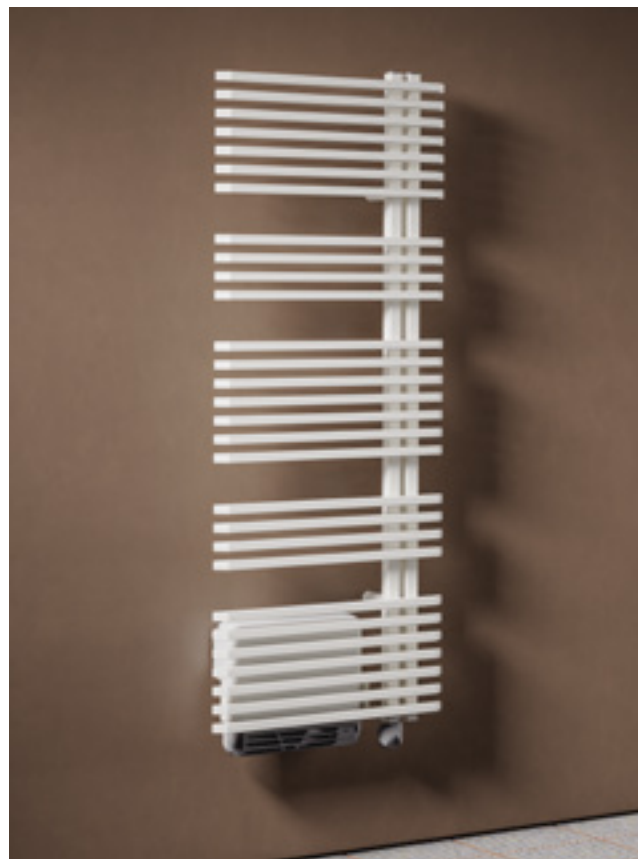
- electric steel towel warmer radiator
- horizontal elements 25x20 mm rectangular steel tubes
- steel square collectors 30x30 mm section
- The radiator is filled with a cooling liquid and is combined with a booster system of electric power of 1000 watts. This blower system provides a temperature uniform with the room in which it is installed.

#### Price included:

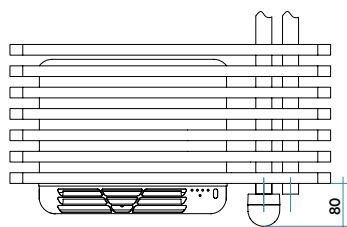
- 4 adjustable wall fixing brackets in the same color of the radiator
- Wireless remote control

Finishes available	Surcharge
Standard White	
Classic finished	
Special finished	
Other RAL colors	

Finishing codes see page 596.



#### Available connection



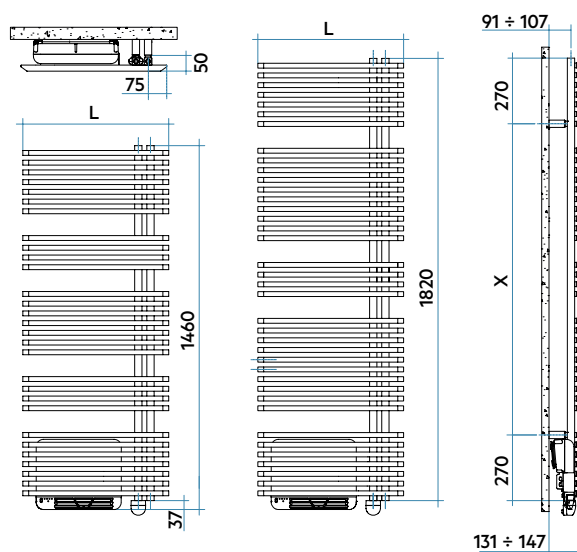
right side manifold

#### Booster



#### MAIN CHARACTERISTICS OF AIR DIFFUSER

- ON/OFF switch
- Power supply 230 V 50 Hz, 1 ph
- Power installed = 1000 W
- Insulation: CLASS II
- Protection index: IP24
- Long electricity cable: 1.200 mm, SCHUKO plug
- Wireless remote control



L mm	H mm	X mm
600	1460	920
600	1820	1280



Model	Code	Depth P mm	Height H mm	Width L mm	Weight Kg	Electric Power Watt	Auxiliary heater with diffuser
							Watt
1460 29 rails 4 espaces	<b>ZBL060 Z 01 IR 01 NNN</b>	124	1520	600	30,9	<b>400</b>	<b>+ 1000</b>
1820 38 rails 4 espaces	<b>ZBG060 Z 01 IR 01 NNN</b>	124	1880	600	38,4	<b>750</b>	<b>+ 1000</b>

The radiator will be supplied with the resistance always mounted on the inner collector.

### Key Codes

Standard White colour code - for different colour codes see the colors page

**ZBL060 Z 01 IR 01 NNN**

Width

**ZBL060 Z**

Height

**01**

**IR**

**01**

Packing code

**NNN**

### Wireless Remote Control

JAZZ\_S AIR ELECTRIC with wireless thermostat is equipped with a wireless controller that allows remote management of every electric radiator function. Because the controller is wireless, it has the advantage of being quick and easy to install and does not require any modifications within the home.

### Technical specifications

- Wireless communication via radio signals transmitted to the receiver connected to the system
- Radiofrequency communication pursuant to European standards
- Operating modes: Manual, Automatic, Comfort, Economy, Holidays
- You can activate 3 manual functions, automatic and holiday
- Can be set comfort temperature of 5°C to 30°C
- Optional ITCS (Intelligent Temperature Control System)
- Open window detection function

